

CAMPUS MAP & NAMING RIGHTS

PHASE I

PHASE II



1 "WEBSTER" HOUSING

BUILDING AMENITIES:

- ★ Apartment Units (14)
Affordable housing for veterans and their families.
- ★ Community Kitchen
- ★ Community Living Room



5 RECREATION / EQUINE CENTER

BUILDING AMENITIES:

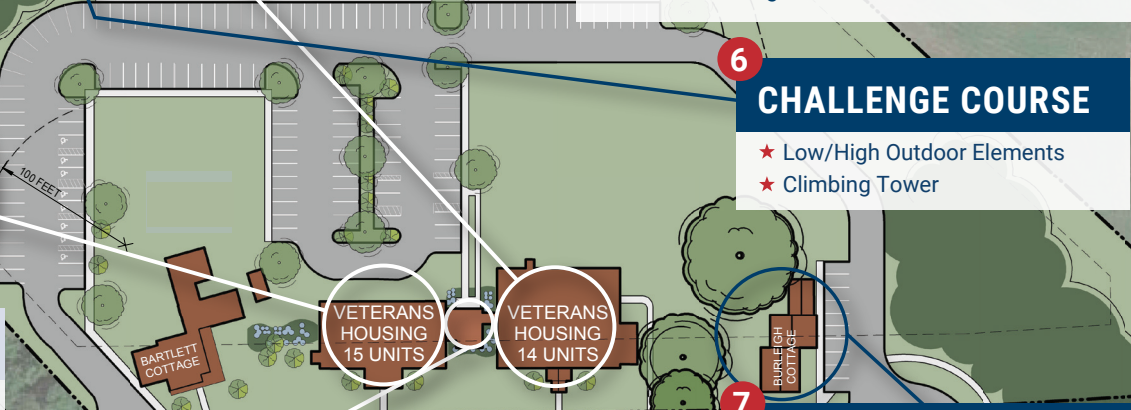
- ★ Recreation Center
- ★ Indoor Riding Arena
- ★ Indoor Challenge Course
- ★ Paddock
- ★ Dog Yard



2 "HENRY" HOUSING

BUILDING AMENITIES:

- ★ Apartment Units (15)
Affordable housing for veterans. Most units are ADA compliant.



6 CHALLENGE COURSE

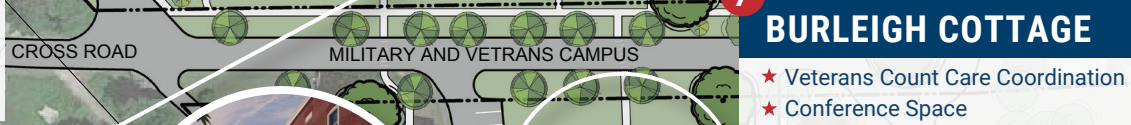
- ★ Low/High Outdoor Elements
- ★ Climbing Tower



3 THE CONNECTOR

BUILDING AMENITIES:

- ★ Accessible Elevator
Ensuring access to affordable housing buildings for all.



7 BURLEIGH COTTAGE

- ★ Veterans Count Care Coordination
- ★ Conference Space



4 BERNADINE HERRON CENTER

BUILDING AMENITIES:

- ★ Welcome Center
- ★ Hub of Services
- ★ Hotel-Style Rooms (22)
- ★ Conference & Meeting Rooms (3)



8 AQUATICS & FITNESS CENTER

- ★ Indoor, Heated 4-Lane Pool
- ★ Fitness Room



ACCESSIBLE ATRIUM



CONFERENCE HALL



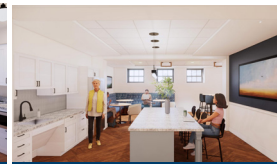
HOTEL-STYLE ROOM



RETREAT LOUNGE



APARTMENT UNIT



COMMUNITY KITCHEN

ALL IMAGES ABOVE ARE CONCEPTUAL RENDERINGS DEVELOPED BY PROCON AND ARE SUBJECT TO CHANGE.

How You Can Help

The more we band together, the greater our impact. How do your interests align with the goals of the Easterseals NH Military & Veterans Campus? Let's discuss your interests and the donor opportunities that meet your needs and serve our veterans and military families. **Explore our exclusive naming opportunities with more than 60 options starting at \$10,000.** Flexible multi-year pledges are available to match your giving goals. Interested in other ways to support the campus? Let's talk!

Gift Levels & Naming Opportunities

\$10,000 - \$49,000

- Accessible One- and Two-Bedroom Apartments
- Retreat Hotel-Style Rooms
- Meeting and Common Space
- Wellness Room

\$50,000 - \$999,000

- Community Gathering Rooms
- Conference Center
- Hub of Services Space
- Reception Area
- Dining/Meeting Space
- Elevator *(to make the housing fully accessible)*

\$1,000,000 - \$5,000,000

- Affordable Housing Buildings
- Multipurpose Recreation Center Makerspace
- Outdoor Music/Performance Stage
- Outdoor Seating/Fire Pit



More naming opportunities may be available.

Please reach out to Pamela Hawkes, Chief Development Officer, at **603.793.3858** or **phawkes@eastersealsnh.org**.